



# Lake to Lake Trail

Rockefeller Park to Lower Shaker Lake

Park Works – University Circle Incorporated – City of  
Cleveland



# East 105<sup>th</sup> Street Intersection of Martin Luther King Jr. Drive







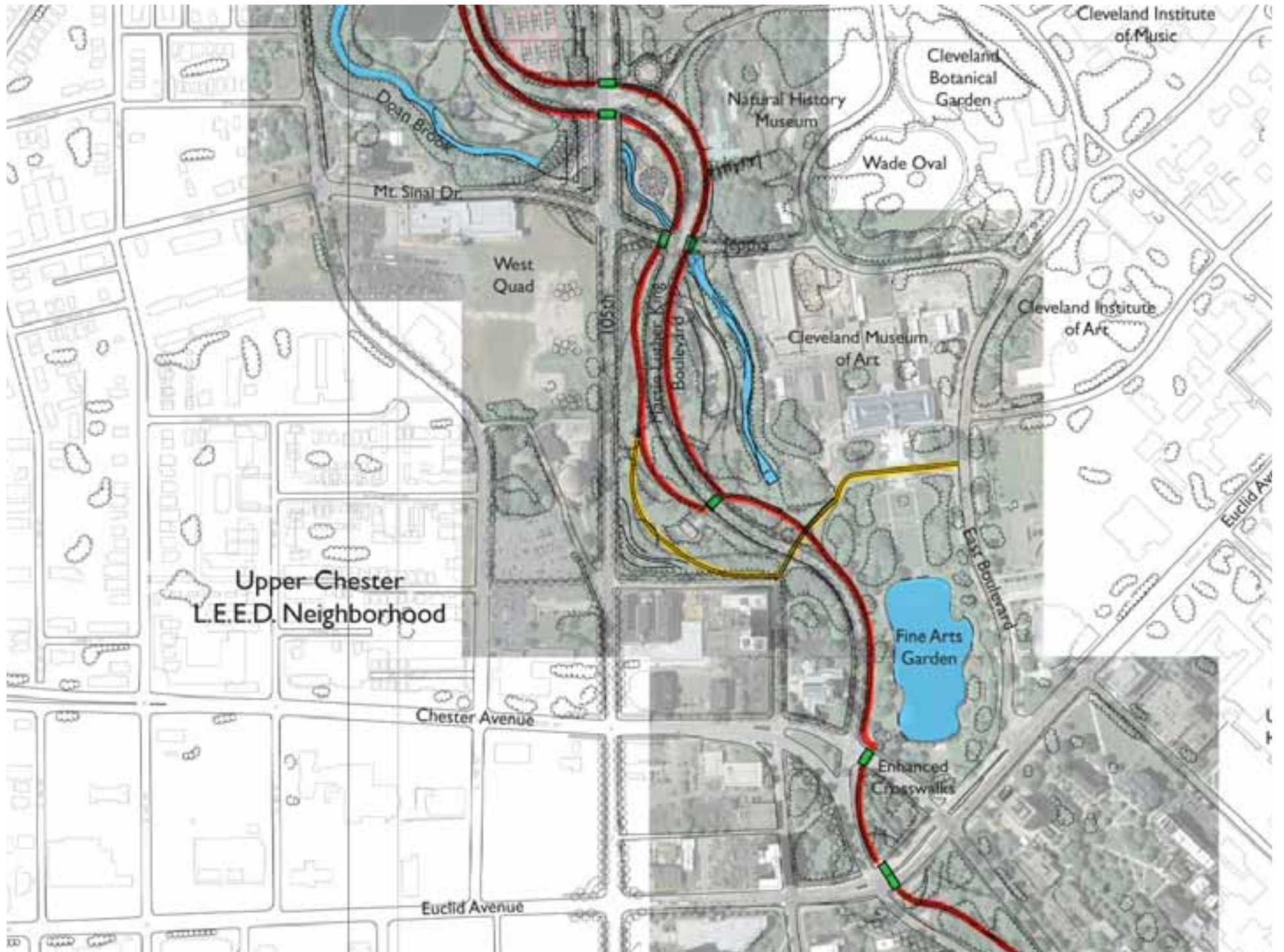


# Lake to Lake Trail

ParkWorks - University Circle Incorporated  
June 2008

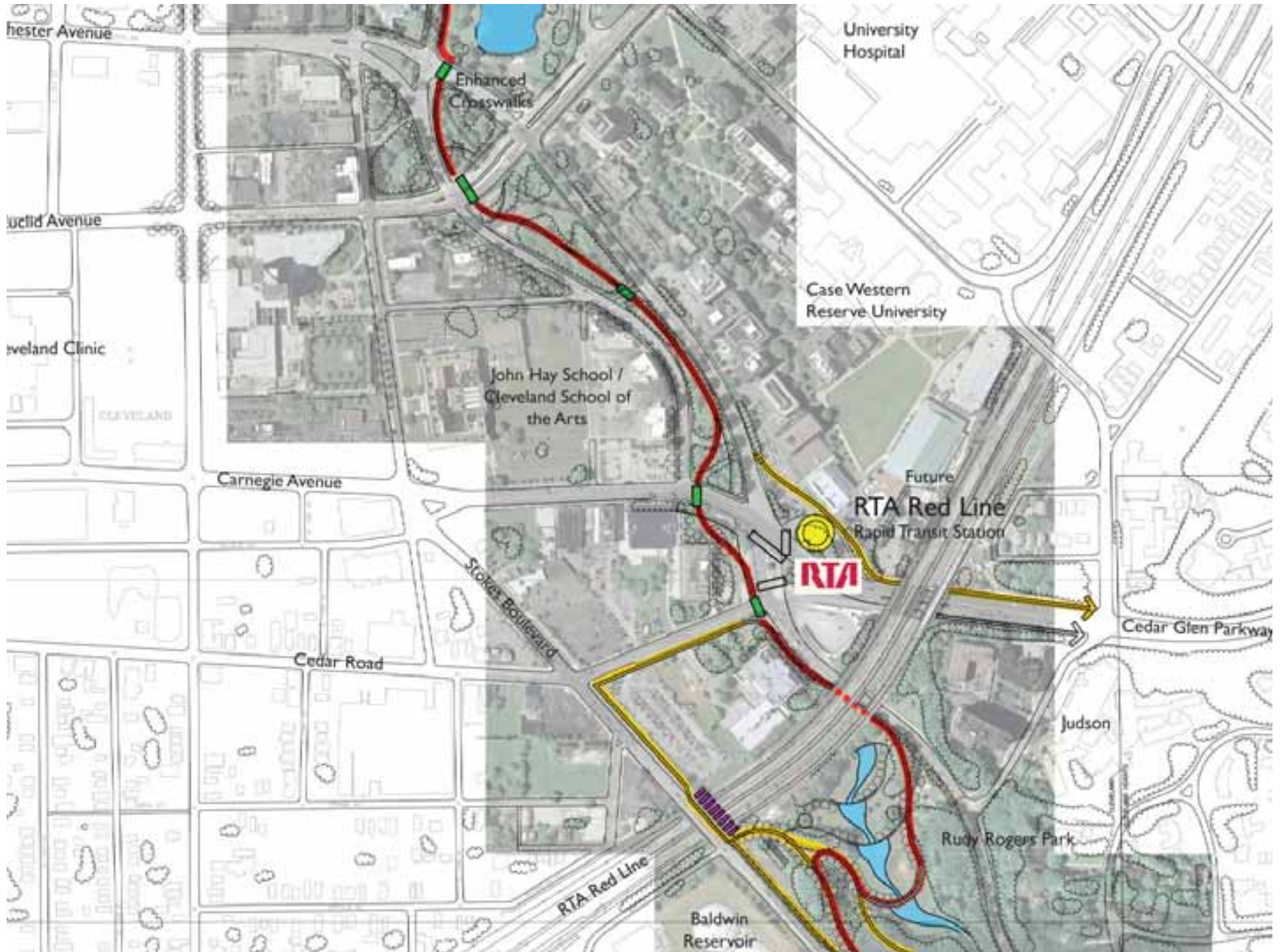


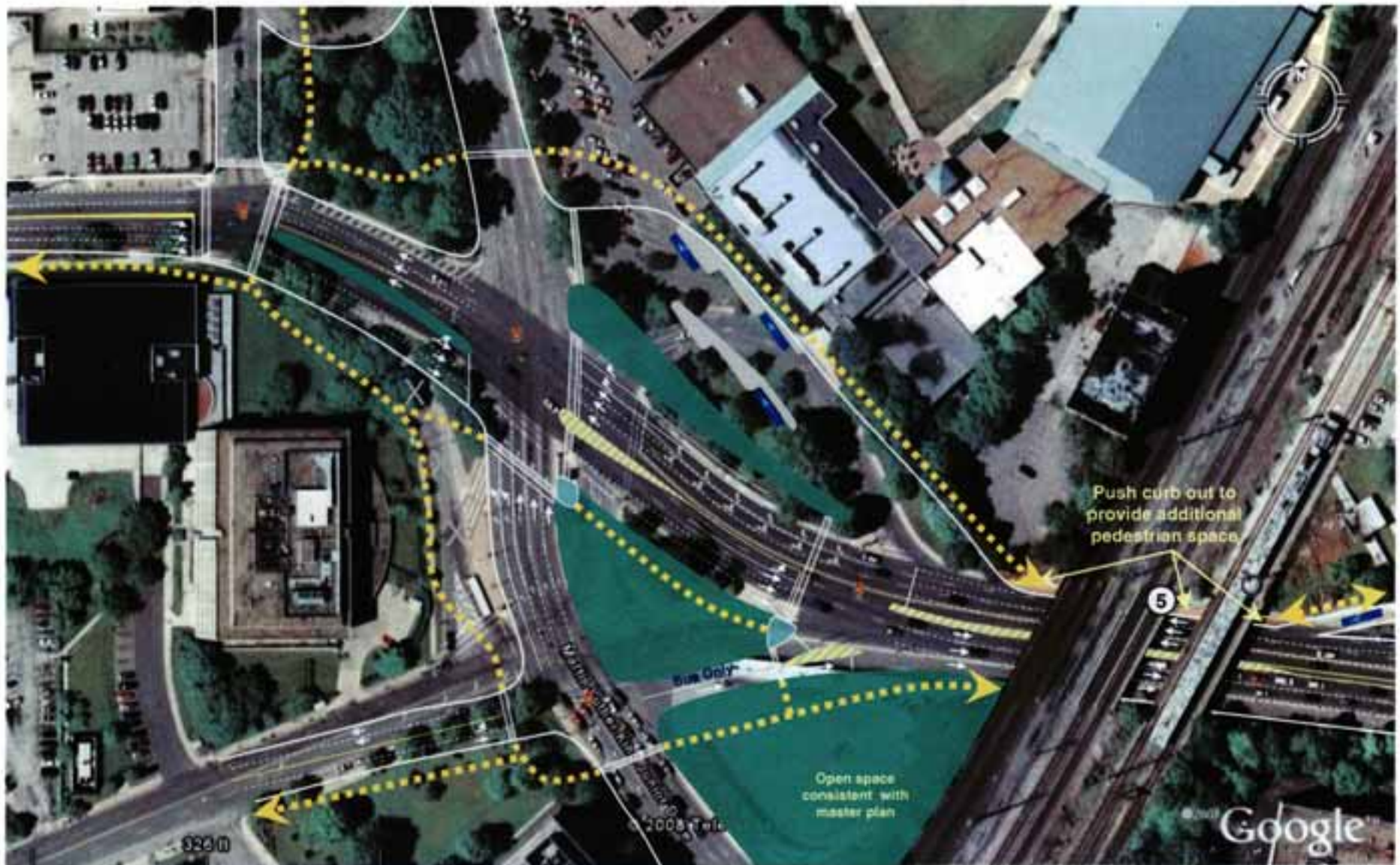
## Overall Plan East 105<sup>th</sup> to Carnegie











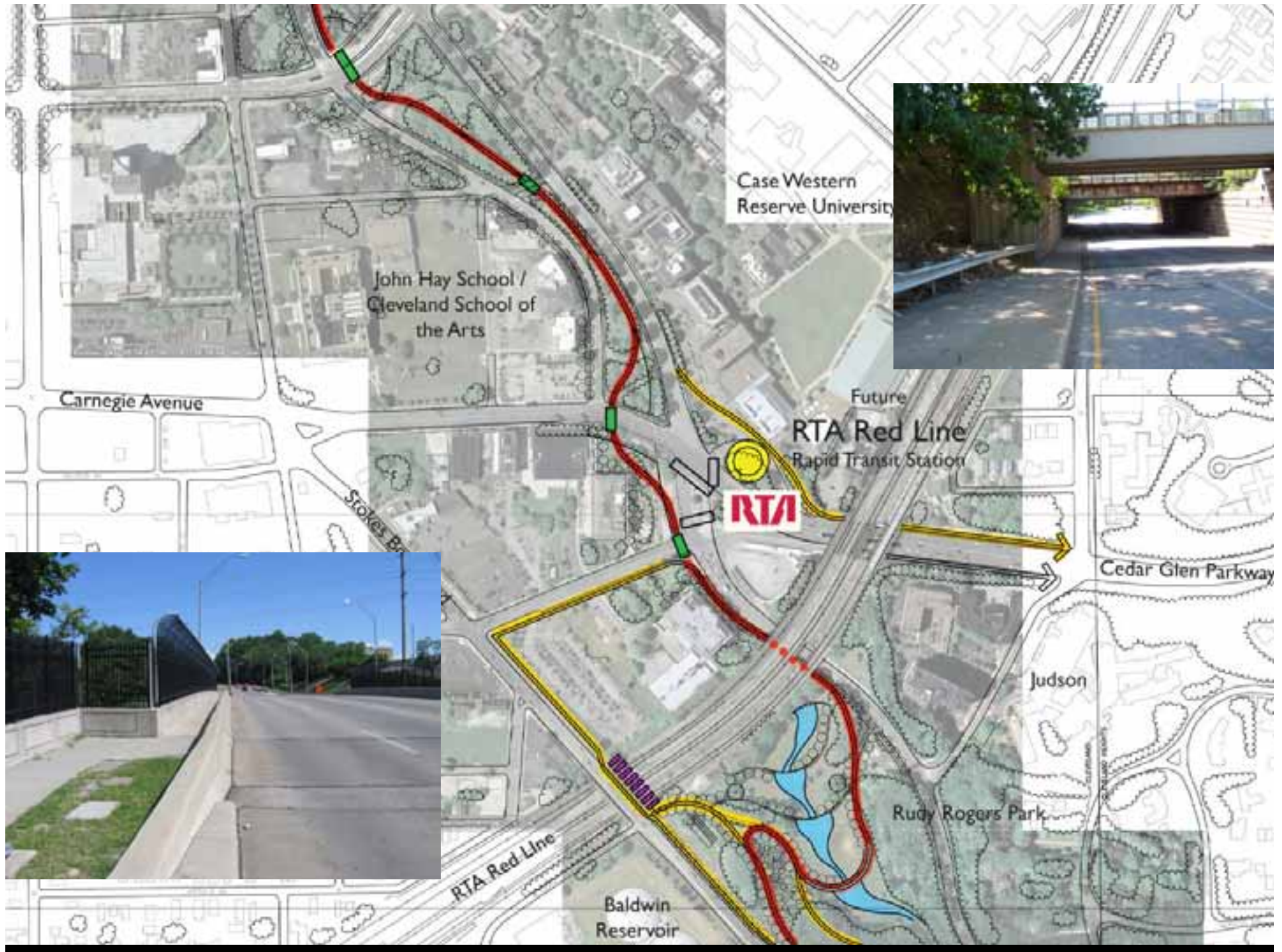
### Option D (Alt. #3) – Pedestrian and Bicycle Connections

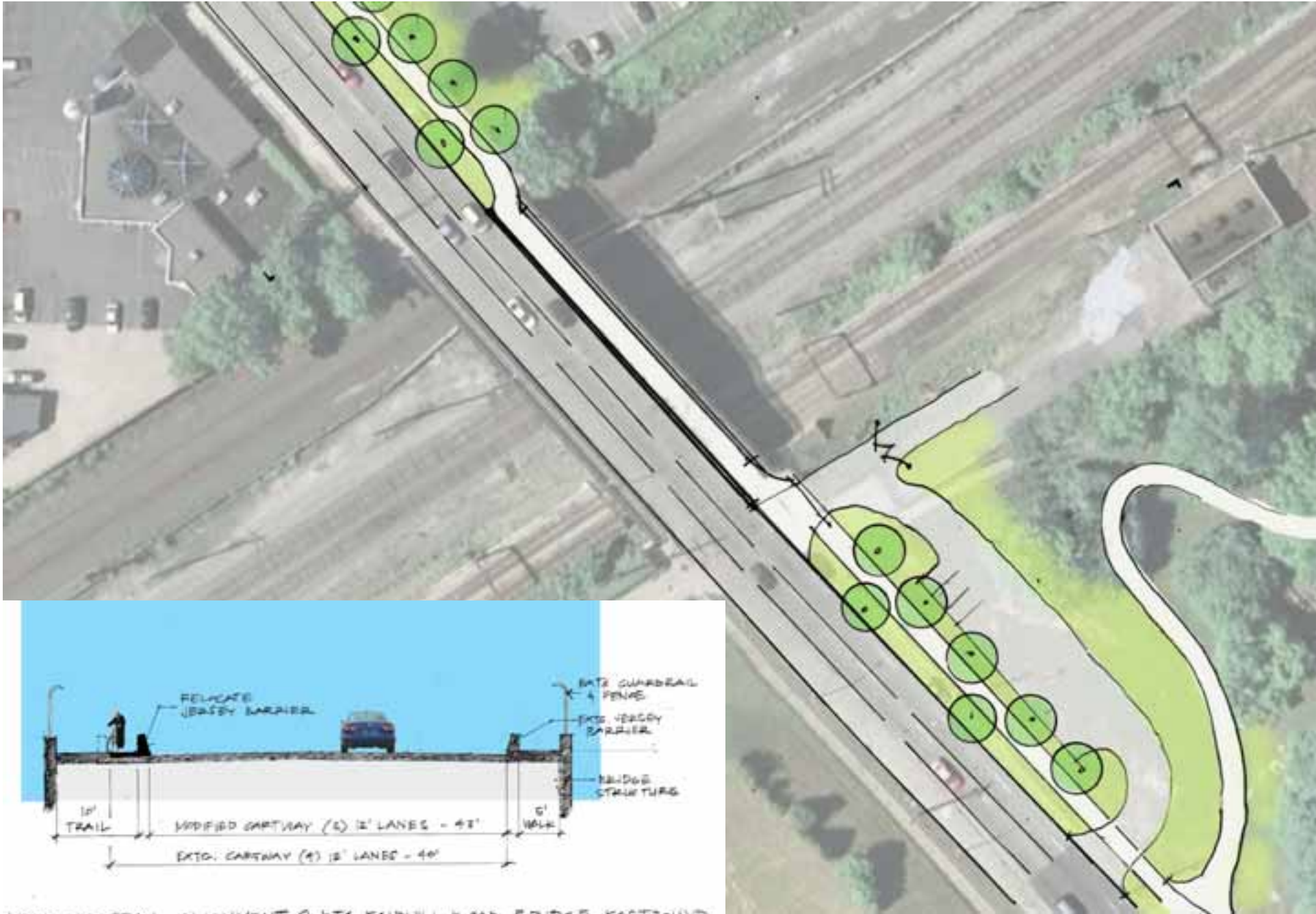
- Existing / Baseline Lane Geometry
- Proposed Mitigation / New Lane Geometry
- ..... Bus Only Lane / Movement

- Bus Movements
- ..... Pedestrian / Bike Connections

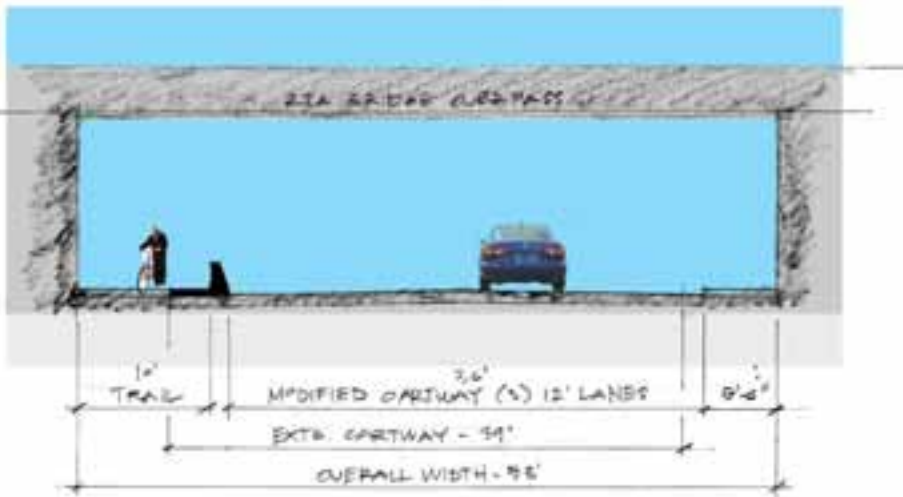








PROPOSED TRAIL ALIGNMENT @ RTA FAIRHILL ROAD BRIDGE EASTBOUND  
 1/8" = 1'-0"

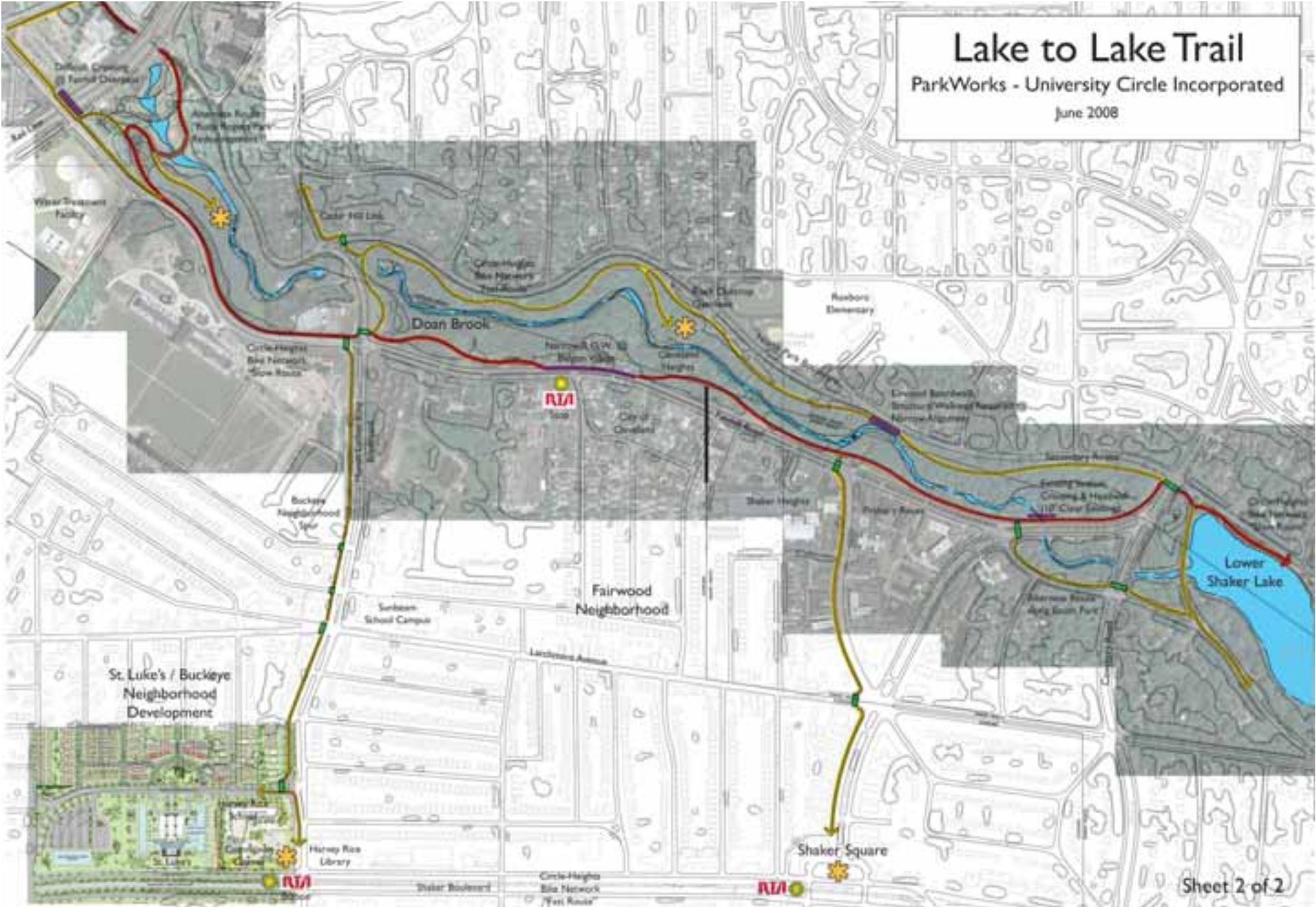


PROPOSED UNDERPASS TRAIL @ M.L. KING JR. DRIVE WESTBOUND  
 $1/8" = 1'-0"$



# Lake to Lake Trail

ParkWorks - University Circle Incorporated  
June 2008



Overall Plan Carnegie to Shaker Lake



NEW PARK PAVILION AND  
PARKING AREA

SCULPTED PONDS WITH  
STNE WEIR WALLS AND  
WALKWAYS

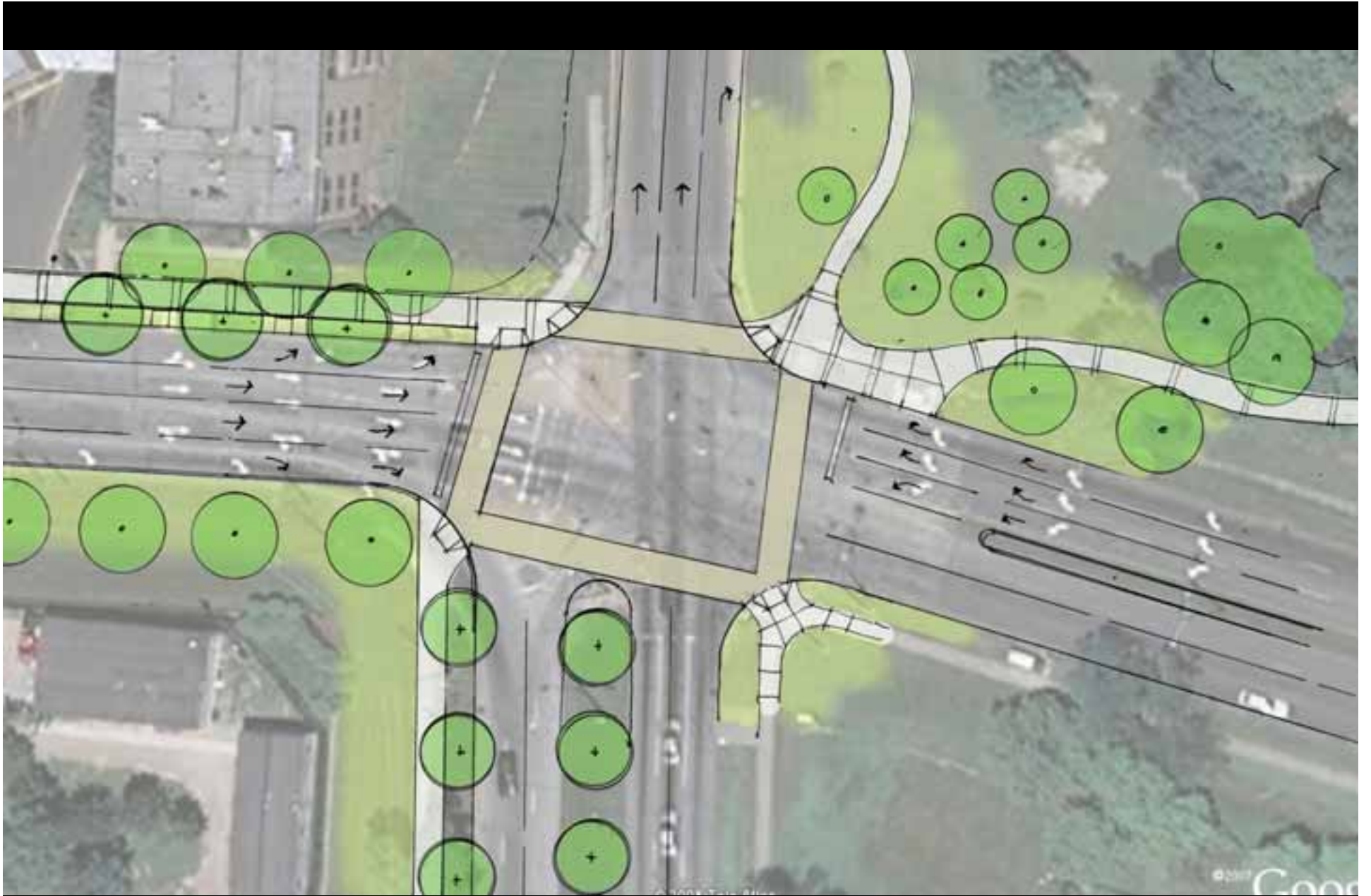
ROUTE BIKE TRAIL THROUGH  
PARK SPACE

OPPORTUNITIES FOR  
ENVIRONMENTAL  
EDUCATION CENTER AS EXTENSION  
OF LOCAL SCHOOLS AND TO SERVE  
AS GATEWAY BETWEEN THE URBAN  
STREAM TO THE NRHT AND THE MORE  
SUBURBAN AND RURAL CORRIDOR TO  
THE SOUTH

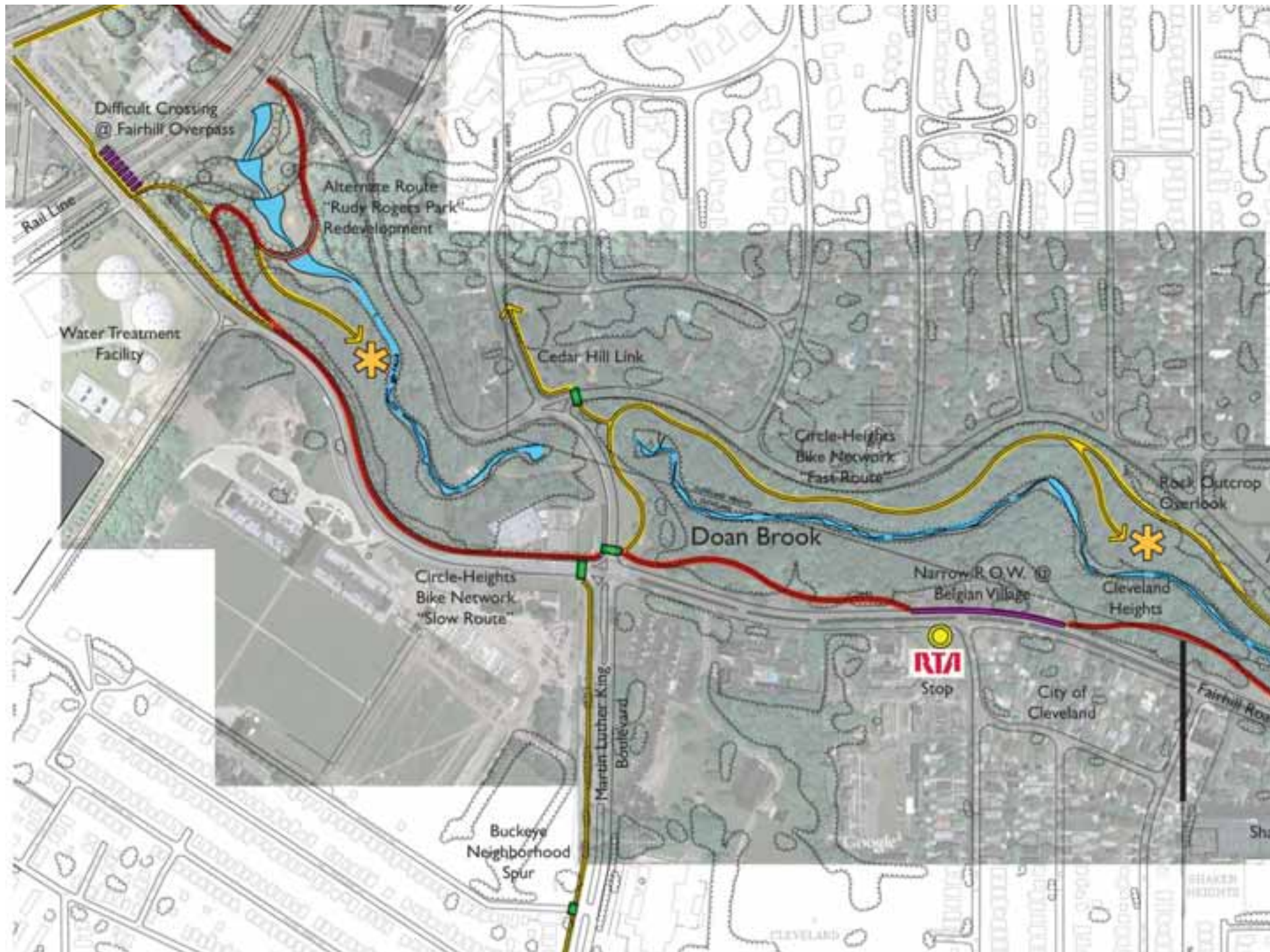








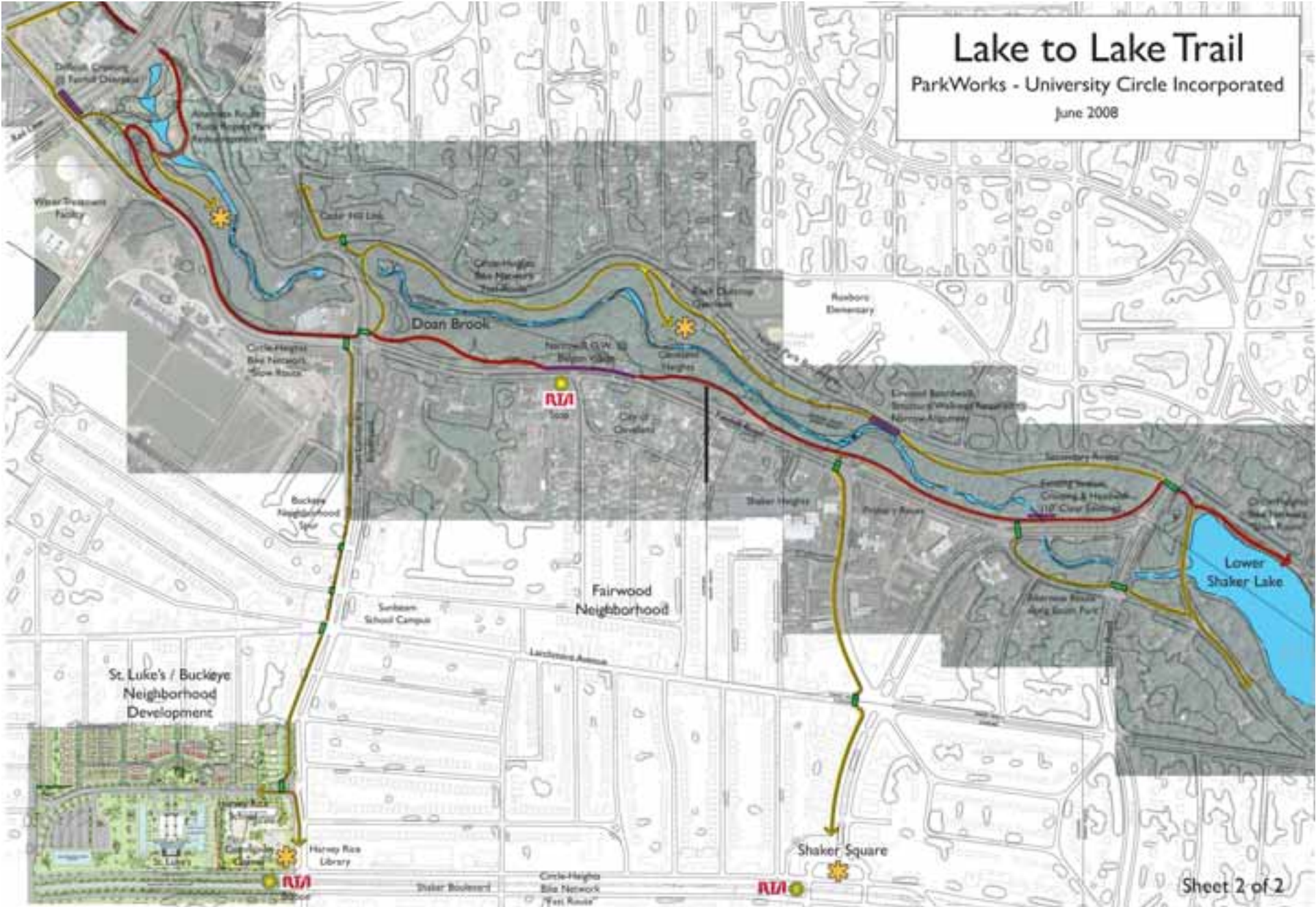
Detail Plan Fairhill and Martin Luther King Boulevard





# Lake to Lake Trail

ParkWorks - University Circle Incorporated  
June 2008



Overall Plan Carnegie to Shaker Lake

# Lake to Lake Trail

ParkWorks - University Circle Incorporated  
June 2008



## Overall Plan East 105<sup>th</sup> to Carnegie